

PK40X-PF UHP PFA Pressure Sensor

Application Scenarios



Semiconductor
/Photovoltaic



Cleaning/Wet
Process Equipment



Corrosive
Medium



Chemical Blending
System



Product Features

Reliable	Range	Acid/Alkali Resistant	Connection
High-purity PFA one-piece molded structure for enhanced safety and reliability.	Capable of wide-range measurement: -14.7 to 145 psi	The sensor is ceramic, and a sapphire version is available for HF/HCl applications.	Various connection options in high-purity PFA material are available.

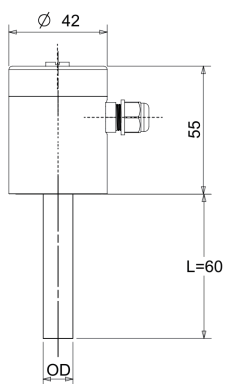
Product Description

- This product features a high-purity, one-piece molded PFA structure with selectable connector options, fully suitable for applications in semiconductor, photovoltaic, flat-panel display, highly corrosive acid/alkali environments, and specialty liquid pipelines.
- The pressure range covers -14.7 to 145 psi, with customizable ranges available to meet specific customer requirements.
- Each unit undergoes 100% testing and temperature compensation, ensuring highly stable and reliable performance.
- The sensor element is ceramic, offering excellent compatibility with acid/alkali media and ultrapure water. For special media such as HF / HCl, a sapphire sensor option is available, providing superior resistance to strong acids and significantly extending product lifetime.

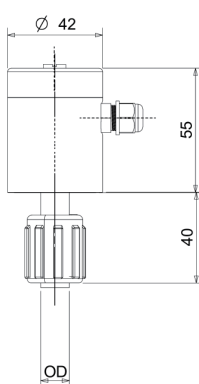
Technical Specifications

Application Scenarios	Gauge, Negative Liquid Pressure Measurement
Measurement Range	-14.7.....0.....145psi
Accuracy (@25℃)	±1%FS
Temp Coefficient	±0.1%FS/℃
Sensor Material	Ceramic/Sapphire
Over pressure	Max: the rated pressure × 3
Medium Temperature	0.....80℃
Ambient Temperature	-10.....65℃
Compensation Range	0.....40℃
Supply Voltage	DC24V (10...30 V DC)
Output Signal	4...20mA, Display version: 4...20mA+PNP/NPN*
Connection Material	PFA
Diaphragm Material	PFA
Stability Performance	Typical: ±1%FS/Year
Process Connection	Tube, Flared, Pillar etc.
Protection Level	IP55

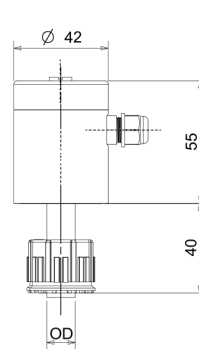
Specifications and Dimensions (Unit: mm)



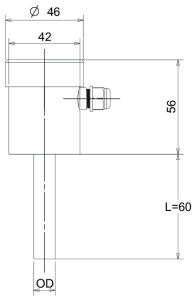
Tube



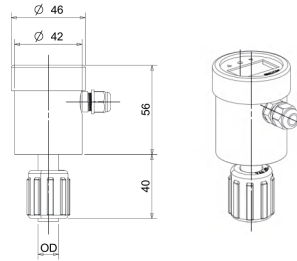
Flared



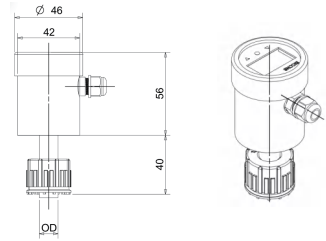
Pillar



Display+Tube



Display+Flared



Display+Pillar

Selection Specifications

Output		Range		Type		Connection		Connection Size		Application (Optional)	
420P	4-20mA+PNP*2+Display	PU	50psi	G	Gauge	T	Tube	1	1/4"	SS	HF/ HCI
420N	4-20mA+NPN*2+Display	PT	75psi	M	Negative	F	Flared	2	3/8"		
1	4-20mA	PS	100psi			P	Pillar	3	1/2"		
		PO	145psi			Y	Others	4	3/4"		
		YY	Customized					9	Others		
10		20		30		40		50		60	

PK40X-PF UHP PFA Pressure Sensor

Selection Example:

Requirement: 4-20mA Output, 0~100psi and 1/2"Tube

Selected Model: PK40X-PF1PSGT3

Range Code Table			
Code	Range	Code	Range
G100K	(0~0.1) MPa	BG100K	(-0.1~0.1) MPa
G200K	(0~0.2) MPa	BG200K	(-0.1~0.2) MPa
G300K	(0~0.3) MPa	BG300K	(-0.1~0.3) MPa
G500K	(0~0.5) MPa	BG500K	(-0.1~0.5) MPa
G700K	(0~0.7) MPa	BG700K	(-0.1~0.7) MPa
G1M	(0~1) MPa	BG1M	(-0.1~1) MPa